

# CATALOGUE



# About Us

Founded in 2002 in Dar-Es-Salaam, Tanzania, Volex Electrical and Decorators Limited set its foot as an electrical supply and equipment trading and services company. Volex is registered by BRELA with tax identification number 106-200-599 and VRN number 40-004104-W. Over the years, the company has earned a reputation for excellence and professionalism for continuously striving to meet – and even exceed – standards which set the climate for a sustainable business relationship with its clients. As an electrical solution specialist, we offer electrical power products ranging from high tension distribution line materials such as transformers, HT cables, XLPE cables, panel boards, power meters, breakers to low voltage materials such as lighting fixtures.

## Our Corporate Values

In tandem with our corporate mission statement, these six core values encompass the character of Volex Electrical and Decorators Limited. They underscore our commitment to people, professionalism, and accountability.

They define us as a company and delineate where we are not willing to compromise

- **Dependability:** Customers, contractors, vendors, and suppliers will be able to count on Volex Electrical management and personnel to be reliable and trustworthy at every exchange.
- **Integrity:** Customers, contractors, vendors, and suppliers will be able to count on Volex Electrical management and personnel to deal straightforwardly and adhere to the strictest moral and ethical codes of business conduct
- **Quality:** Customers and end-users will be able to count on Volex Electrical technical execution and workmanship to be among the highest in the industry.
- **Customer Service :** Volex Electrical is committed to total customer satisfaction. Whether its B2B or B2C, we pledge to meet or exceed customer expectations on every project.
- **Employees :** Volex Electrical recognizes that its greatest asset is its people. We pledge to treat each employee with integrity, dealing honestly with all. We will offer competitive compensation packages and provide the best tools, equipment and training across each segment of the trade. We will maintain a corporate culture where new ideas and innovative thinking are welcome and rewarded.
- **Versatility and Adaptability :** As a full-service electrical contractor, Volex Electrical will continue expanding its expertise and resources across all disciplines of electrical construction. We will make inroads into new and emerging markets and not shy away from that which is unique and challenging. We guarantee responsiveness and adaptability to change.

## **Vision**

Volex Electrical and Decorators Limited firmly believes that electricity is the cornerstone of a high-quality life. There will be a never-ending need for products and services to harness and maximize its full potential and use. In doing so, we will be the best-in-class supplier of topnotch electrical products and services in East Africa by 2025.

## **Mission**

As one of the Tanzania top-ranking electrical material supplier, Volex Electrical and Decorators Limited is committed to providing the highest quality products and services exceeding our client's expectations. Whether its B2B or B2C We will meet and exceed customer expectations through our full-spectrum of electrical design, build and maintenance services, state-of-the-art assets and superior financial strength, completing projects on time and on budget. We shall continue to develop and supply intelligent solutions and services for electrical distribution systems and adapt to our customer needs, enabling the supply of energy safely and reliably. As we carry out our mission, we shall be guided by values of integrity, reliability, commitment, and collaboration.

NB: Volex Electrical Engineering has more than 30,000 items. Here are some of the items.



# Contents

- i. HT /LT Materials ..... 1**
- ii. Industrial Materials ..... 12**
- iii. Tools ..... 17**
- iv. Products Brands ..... 23**

# i. HT/LT Materials 33Kv and 11Kv

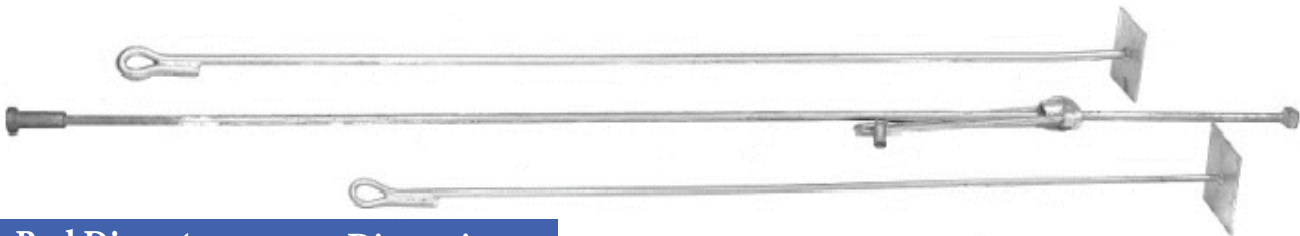
“Volex Electrical provides a full range of electrical line HT and LT materials”

## Pull Lift.



Type
1 Ton
1.5 Ton
2 Ton
3 Ton

## Stay-rod Assembly.



Rod Diameter	Dimensions
12mm	M12 x 1500mm
20mm	M20 x 2000mm
24mm	M24 x 2400mm
24mm	M24 x 3000mm
16mm	M16 x 1800mm
20mm	M20 x 1800mm
20mm	M20 x 2400mm
25mm	M25 x 2400mm
24mm	M24 x 2400mm

## Ball ended hook



Ball Ended Heavy Duty Pig Tail Hook M16 x 250mm
---

## Base plate



Size
14' x 14'
16' x 16'
18' x 18'

Cross Arm.



Channel	Angle
5 Ft	5 Ft
6 Ft	6 Ft
7 Ft	7 Ft
8 Ft	8 Ft
9 Ft	9 Ft
10 Ft	10 Ft

Overhead Line Hardware



Description	Dimensions
Tie/Bracing Strap	701 x 50 x 6mm
Tie/Bracing Strap	910 x 50 x 6mm
Tie/Bracing Strap	40x 3x 3000mm
LV Pole Bracket	10 x 60 x 720mm
Swivel Strut Bracket	100 x 50 x 11 x 350mm
Twisted Tie Strap	1067 x 40 x 6mm
Twisted Tie Strap	1065 x 50 x 6mm

Description	Dimensions
Pigtail Bolt Assembly	M10 x 280mm
Pigtail Bolt Assembly	M16 x 380mm
Eyebolt Assembly	M16 x 250mm
Eyebolt Assembly	M20 x 250mm
Eye Nut	M16
Eye Nut	M20
Pigtail Screw	M10 x 150mm
Coach Screw	M12 x 75mm

Stringing Hardware



Description	Application
Pistol Grip Aluminium 3 Bolt	5 to 16mm
Pistol Grip Aluminium 3 Bolt	18 to 30mm
Pistol Grip Cast Iron 3 Bolt	5 to 16mm
Cradle Suspension Clamp Aluminium	8 to 18mm
Cradle Suspension Clamp Aluminium	15 to 26mm
Thimble Clevis Aluminium	18mm
Thimble Clevis Aluminium (Conductive)	18mm

GAY GRIP



Wrap-lock Ties



Side Ties



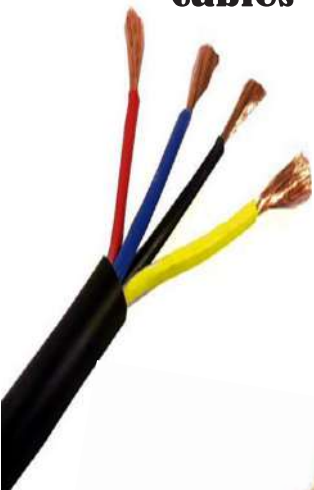
Line Tape



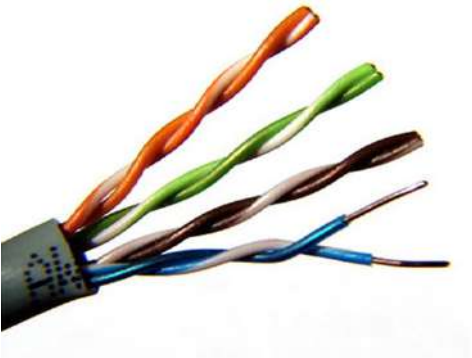
Section Strap



Cables



Description
Armoured Cables
HT Cables
Control cable flexible
Communication cables (Ethernet Cable)
Alluminium Wire



Type	Size	Voltage
ACSR	50 mm sq.	Up to 35 KV
ACSR	100 mm sq.	Up to 35 KV
2 core	4 mm sq.	Up to 35 KV
2 core	6 mm sq.	Up to 35 KV
2 core	10 mm sq.	Up to 35 KV
2 core	16 mm sq.	Up to 35 KV
2 core	25 mm sq.	Up to 35 KV
2 core	35 mm sq.	Up to 35 KV
2 core	50 mm sq.	Up to 35 KV
2 core	95 mm sq.	Up to 35 KV
2 core	120 mm sq.	Up to 35 KV
4 Core	2.5 mm sq.	Up to 35 KV
4 Core	4 mm sq.	Up to 35 KV
4 Core	6 mm sq.	Up to 35 KV
4 Core	16 mm sq.	Up to 35 KV
4 Core	25 mm sq.	Up to 35 KV
4 Core	35 mm sq.	Up to 35 KV
4 Core	50 mm sq.	Up to 35 KV
4 Core	70 mm sq.	Up to 35 KV
4 Core	95 mm sq.	Up to 35 KV
4 Core	120 mm sq.	Up to 35 KV
4 Core	150 mm sq.	Up to 35 KV
4 Core	185 mm sq.	Up to 35 KV
4 Core	240 mm sq.	Up to 35 KV
4 Core	300 mm sq.	Up to 35 KV



**Transfomer**

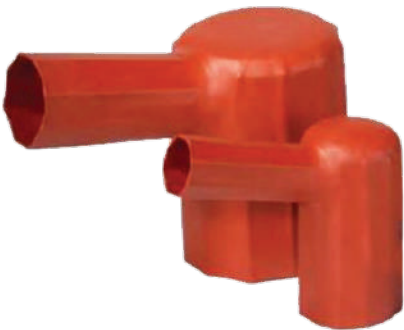


**Cable Termination Kit (Reychem)**



Voltage	Core	Size
11 - 17 Kv	1 & 3	15 - 300 mm2
26 - 36 Kv	1 & 3	15 - 300 mm2

**Right Angle Heat Shrink Boots**



**Industrial Plugs**



Current	Pins
16 A	3, 4 and 5
32 A	3, 4 and 5
63 A	3, 4 and 5

# Insulators



Type	Voltage
Shackle	11 Kv
Strain Stay	11 Kv
Strain Stay	33 Kv



Description	Dimensions
D Bracket for Shackle Insulator	120 x 50 x 91mm
D Bracket for Shackle Insulator	135 x 50 x 102mm



Type	Voltage
Porcelain Disk	11 Kv
Glass Disk	11 Kv



Type	Voltage
silicone rod insulator	11 Kv
silicone rod insulator	33 Kv

# Spindles



Description	Dimensions
Capless Line Post Insulator	M20 x 50mm
Capless Line Post Insulator	M20 x 250mm
Ratchet For Capped Line Post Insulator	M20 x 50mm
Ratchet For Capped Line Post Insulator	M20 x 250mm
Lead Head for Pin Insulator	M2 x 50mm
Lead Head for Pin Insulator	M2 x 180mm
Lead Head for Pin Insulator	M2 x 230mm

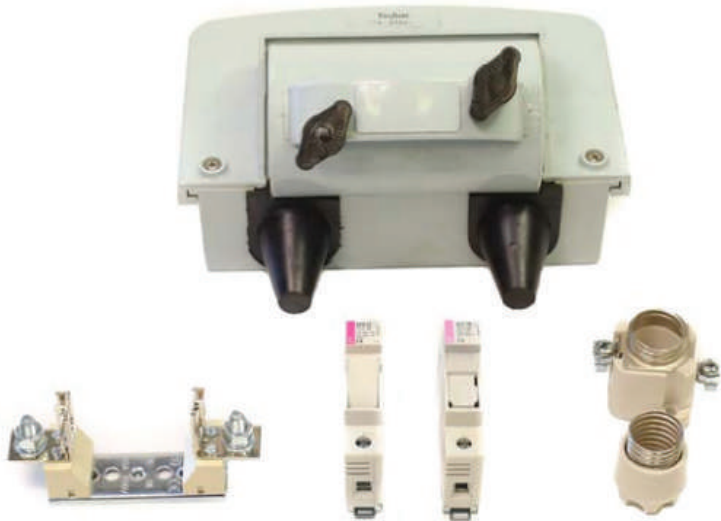
# Fuses



Type	Available Rating
NH00	2A – 160A
NH0	6A – 200A
NH1	50A – 200A
NH2	63A – 400A
NH3	250A – 630A
NH4	63A – 1600A



Type	Available Rating
E27	2A – 25A
E33	33A – 63A
CH8X32	1A – 25A
CH10X38	0.5A – 16A
CH14X51	2A – 25A
CH22X58	16A – 40A
MJ30	80A – 315A



Type	Rating
BD400SP	400A
NH	160A
EFD10	32A
E27 (Base)	25A
E27 (Cap)	25A
E33 (Base)	63A
E33 (Cap)	63A

## Fuses



Type	Available Rating	Voltage
FL8K	1A – 100A	11 kV
FL16K	1A – 100A	33 kV



Type	Voltage
Silicone	11 / 33 kV
Porcelain	11 / 33 kV



Available Rating	Voltage	Length
2A – 160A	7.2 kV	192mm
2A – 160A	12 kV	292mm
2A – 160A	17.5 kV	367mm
2A – 125A	24 kV	442mm
2A – 80A	36 kV	537mm



Available Rating	Voltage
6.3A – 63A	12 kV
71A, 80A	12 kV
6.3A – 100A	12 kV
125A	12 kV
2A – 80A	12 kV

# ABC Accessories (Insulated Neutral)



Type	Range
Strain Assembly	50 - 70mm <sup>2</sup>



Type	Range
Suspension Assembly	25 - 95mm <sup>2</sup>



Type	Range	Diameter
Strain Clamp	50-70mm <sup>2</sup>	11 – 14mm
Strain Clamp	35-70mm <sup>2</sup>	6 – 9mm



Type	Range	Range
Suspension Clamp	50 - 70mm <sup>2</sup>	50 - 70mm <sup>2</sup>
Suspension Clamp	35-50mm <sup>2</sup>	6 – 9mm



Type	Range	Tap
Connector	16 – 95mm <sup>2</sup>	1.5 – 10mm <sup>2</sup>
Connector	25 – 95mm <sup>2</sup>	4 – 35mm <sup>2</sup>
Connector	25 – 95mm <sup>2</sup>	25 – 95mm <sup>2</sup>
Connector	35 - 95mm <sup>2</sup>	6 - 35mm <sup>2</sup>
Connector	25 - 95mm <sup>2</sup>	25 - 95mm <sup>2</sup>

## House Service Fittings



Type	Range
Service Strain	4 – 10mm
Service Strain	4 – 16mm



**Stay Wire**

Type	Range
Service Suspension	9 -17mm



**Metallic flexible conduit**

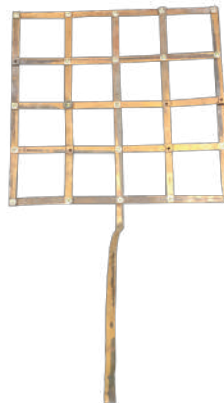


**Barbered Wire**

**Earth Rod and Clamps**



**Copper Mash**



**Copper Cable Lugs**



**Bimetal Cable Lug**



**Plastic Cable Gland**



**Metallic Cable Gland**



**Copper Cable Gland**



## ii. Industrial Materials

### Contactors



Coil	Voltage Range (50/60Hz)
AC 12V	12 V
AC 24V	24 V
AC 48V	48 - 50 V
AC 100V	100 - 127 V
AC 200V	200 - 240 V
AC 300V	260 - 300 V
AC 400V	380 - 440 V
AC 500V	460 - 550 V

### MCB



### MCCB



### Overload



### Induction Motor



### Motor Drive

**Push Button**



**Siren**



**Photocell Light Sensor**



Type
Motion Detector
Light Detector

**Tower Light**



**Roadway Lights**



**Pannel Buzzer**



**Panel Fan**



**Fan Filter**



**Limit Switch**



**Generator Control Panel**



# Testers

**Digital Multimeter**



**Clamp Meter**



**Digital Earth Tester**



**Multitester**



**Insulation resistance tester**



**Infrared Thermometer**



## Testers

**Megger Insulation Tester**



**Megger Insulation Resistance Tester**



## Meters



**Isolator Switch**



## Distribution Board



## Control Panels Enclosure



Type	Size
Starter	30 HP
LV Panel	630A / 8 WAY
Stardelta Starter	45 HP
Automatic Power Factor Correction Unit	100 Kvar

## Test Equipment



Type	Application	Voltage Range
Voltage Detector	Indoor / Outdoor	5 – 1000 V
Voltage Detector	Overhead Lines	2 – 36 KV

# Earthing Systems



Type	Size	Application	Rating
Working Earth Kit	16mm <sup>2</sup>	Reticulation Lines 1 – 33kV	3kA/1sec



Type	Size	Application	Rating
Control Earth Kit	40mm <sup>2</sup>	Reticulation Lines 1 – 33kV	8kA/1sec



Type	Size	Application	Rating
Control Earth Kit	95mm <sup>2</sup>	Substations	20kA/1sec

# Personal Protection Equipment (PPE)



Type	Capacity
Plastic Insulated	Up to 35 Kv



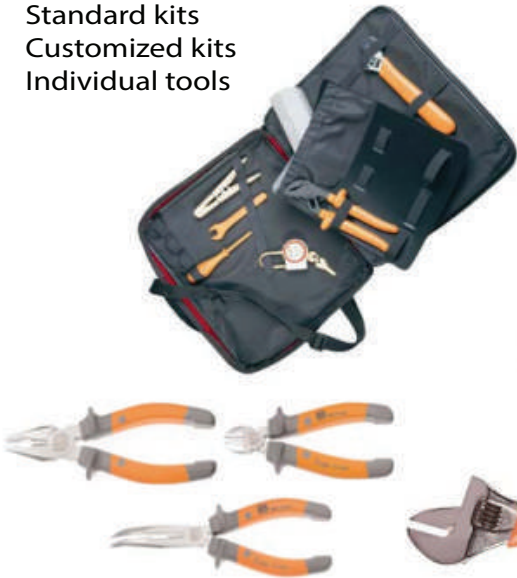
Type	Application	Specifications
Work Safety Shoes	Outdoor	Pure Leather



Type	Application	Voltage Range
Industrial Helment	Outdoor	1000 V

**Available in:**

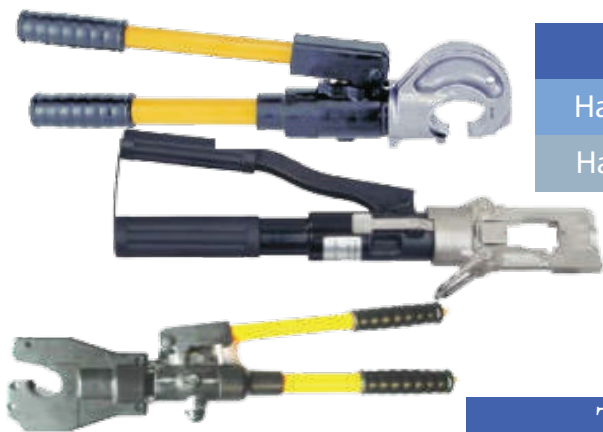
- Standard kits
- Customized kits
- Individual tools



Type	Application	Voltage
Insulated Tools	Live Working	1000 V



ii. Tooling



Type	Application	Capacity
Hand Hydraulic	Hexagonal crimping	ABC/6 – 150mm <sup>2</sup>
Hand Hydraulic	Hexagonal crimping	6 – 300mm <sup>2</sup>



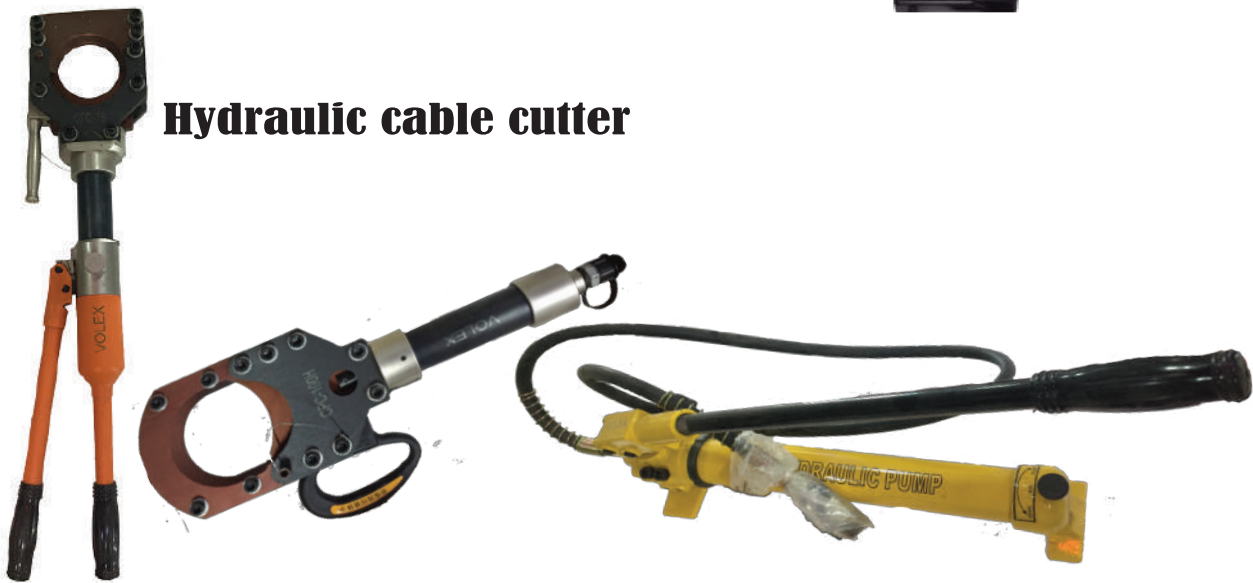
Type	Application	Capacity
4 Indent Hand Hydraulic	Die-Less crimping	500KCM



Type	Application	Capacity
Hand Hydraulic	Cutting	Available up to 85mm
Battery Hydraulic	Cutting	Available up to 50mm



Hydraulic cable cutter



Hydraulic Pump For cable cutter

## Hydraulic cable cutter



Name	QY130	QY148
Cut the maximum diameter of wire rope	30 mm	48 mm
Piston process	>38 mm	>60 mm
Moving process	10 mm	8.8 mm
The maximum shear stress	7.5 t	20 t
Oil storage	0.19 L	0.30 L
Handle force	<25 kgf	<36 kgf

## Drilling Machine



## Tools Box



## Come Along



# Fibreglass and Wooden Ladders

Closed Height	Extended Height	Weight
3.0 m up to 14.2 m	5.1 m up to 10.8 m	Up to 40 Kg

## Climbing Shoes



## Safety Belt



Wooden Ladder

## Products Brand

**ABB**

**Schneider**  
Electric

**VOLEX**

**MEM**

**FLUKE**®

**KRIPAL**®



**Telemecanique**



**MITSUBISHI**

**SIEMENS**

**CHINT**

**marathon**®

**EATON**

**hapn**  
Electric

**ANDELI**

**VOLEX**



**Electrical and Decolators Ltd**

**Location: House No. 3, Kariakoo, Narung'ombe & Gogo Street  
P.o Box 65359 Dar es salaam - Tanzania**

**Tel: +255 (0) 784 333 822 Fax: +255 22 2184040**

**Email: [sales@volxelectrical.co.tz](mailto:sales@volxelectrical.co.tz), [info@volxelectrical.co.tz](mailto:info@volxelectrical.co.tz)**

**Website: [www.volxelectrical.co.tz](http://www.volxelectrical.co.tz)**